



MOC - Roles and Permissions

LEVEL 1	●	●	MOC-specific roles which are assigned through the MOC process by naming users as appropriate. Assignment of these roles is unique to each individual MOC and cannot be assigned system wide by an administrator.						
LEVEL 2		●							
LEVEL 3		●							
LEVEL 4		●							
LEVEL 5		●							
LOCATION LEVEL AVAILABILITY OF ROLES ↑	Global	System	MOC	Creator*	Initiator*	Design Group*	Approval Group*	Implementer*	Responsible for
MOC PERMISSIONS ↓	Administrator	Administrator	Coordinator*						PSSR*

GENERAL PERMISSIONS

Generate MOC Reports	●	●							
----------------------	---	---	--	--	--	--	--	--	--

NOTE - Users assigned the following roles cannot initiate an MOC: View Access, Executive, Legal, Human Resource. Once an MOC has been initiated, it can be monitored by all users who have been assigned a role. MOC reports can be generated by users assigned all roles except Legal and Human Resources.

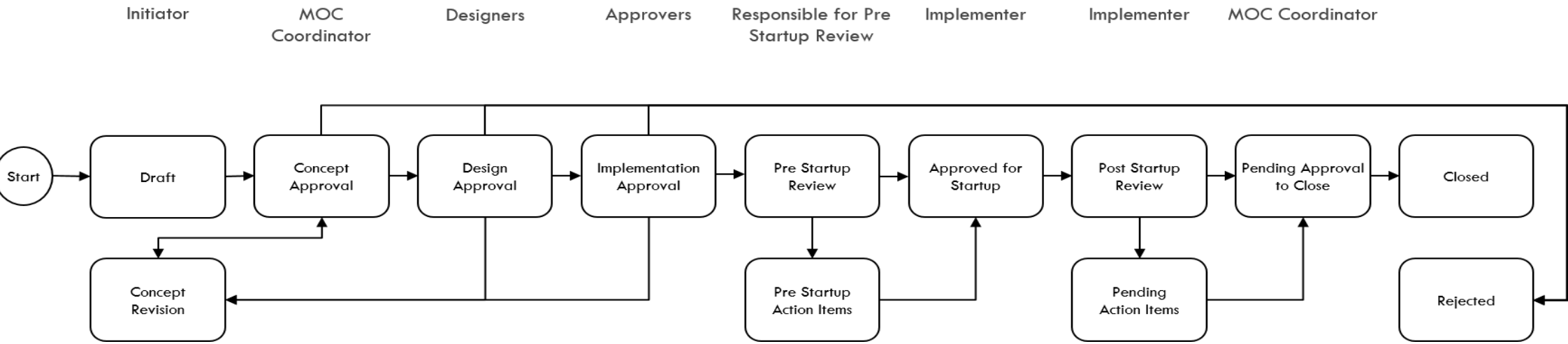
MOC PERMISSIONS

Edit MOC									
Draft	●	●			●				
Concept Approval	●	●	●						
Concept Revision	●	●	●		●				
Design Approval	●	●	●						
Implementation Approval	●	●	●				●		
Pre Startup Review	●	●	●						●
Pre Startup Action Items	●	●	●						
Approved for Startup	●	●	●					●	
Temporary Implementation	●	●	●					●	
Extension Approval	●	●	●						
Permanent Review	●	●	●						
Post Startup Review	●	●	●					●	
Pending Action Items	●	●	●					●	
Pending Approval to Close	●	●	●						
Closed	●	●							
Rejected	●	●							
View MOC									
Draft	●	●		●	●				
All other stages	●	●	●						
Edit MOC Responsibilities									
Draft	●	●		●	●				
All other stages	●	●	●	●	●	●	●	●	●
Request Revision									
Concept Approval			●						
Design Approval	●	●	●			●		●	
Implementation Approval	●	●	●				●	●	
Approved for Startup	●	●	●					●	

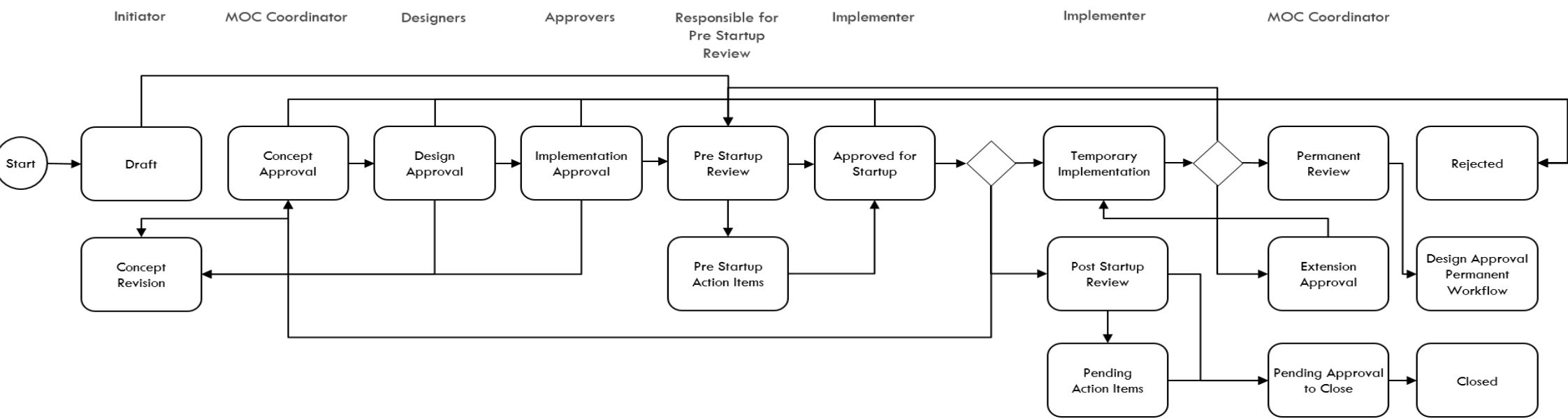
*Roles that are assigned through the MOC process by naming users as appropriate. These roles are specific to each individual MOC and cannot be assigned by an administrator system wide.

MOC - Workflow

Permanent Change Workflow



Emergency Change Workflow



Temporary Change Workflow

